



DOCUMENT

VX-SOP-TWR-05 · Rev 1.0

Generated 2026-04-29 · Jacksboro, TX



WHOLESALE ONLY · MADE IN TEXAS · LIFETIME WARRANTY

5' TOWER ASSEMBLY

5' TOWER FOR 4×4, 4×6, AND 5×6 BLINDS

TOOLS

1/2" & 9/16"

wrench, ratchet & socket
· all Grade 5

CREW

2 people

no extra hand needed for
5' stand-up

TIME

~ 90 min

5' field assembly

SURFACE

Level ground

12' × 8' working area ·
level for stand-up

BEFORE YOU START

PARTS CHECKLIST

Cross-referenced to the BOM. Confirm every item is in the kit before you start. Anything missing or damaged: stop and contact your dealer or VisionX directly.

MEMBER LENGTHS · DON'T MIX THEM UP

Measure and pre-sort by length before starting — they look nearly identical.

Horizontal Brace · 70½"

VX-HB-5

Diagonal Brace · 78"

VX-DB-5

FRAME · 5' TOWER

- 1 Blind Base VX-BASE-44 / 46 / 56
- 4 5' Tower Leg VX-LEG-5
- 4 Horizontal Brace VX-HB-5
- 4 Diagonal Brace VX-DB-5

MOUNT & STAND

- 1 Tower / Blind Bolt Kit VX-BOLT-KIT
- 1 Porch Handrail VX-RAIL-PORCH

STAIRWAY · 5'

- 1 5' Stairway VX-LADDER-5
- 2 5' Stairway Handrails · one each side VX-RAIL-STAIR-5
- 4 Handrail Mounting Blocks · two per handrail

BLIND-TO-BASE HARDWARE · ALL GRADE 5

- 4 ¾" Hex Bolts
⅜" wrench · ships in the bolt kit
- 8 1¼" Fender Washers
two per bolt · one each side
- 4 ¾" Nylock Nuts

FRAME BOLT KIT · ALL GRADE 5

- 24 ⅝" × 1½" Hex Bolts
½" wrench
- 48 ⅝" Flat Washers
two per bolt · one each side
- 24 ⅝" Nylock Nuts
match bolt count

HANDRAIL HARDWARE · ALL GRADE 5

- 8 2" × ⅝" Hex Bolts
4 porch + 4 stairway
- 8 ⅝" Flat Washers
one per bolt · head side
- 8 ⅝" Nylock Nuts
4 porch + 4 stairway

ANCHOR KIT · CUSTOMER-SUPPLIED


- 6 Stakes
4 tower feet · 2 stairway feet
- 1 Steel Cable Run
ground anchor → 4 blind-base bolts
- 1 Ground Anchor
auger, helical, or drive-in · soil-rated
- 4 Short Chain Sections
recommended · cable-to-bolt

BEFORE YOU START

PARTS IDENTIFICATION

Verify each part visually as you unpack — lengths are called out on the ones that are easy to mix up.

1 x



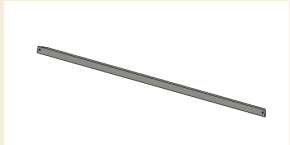
Blind Base

4 x



5' Tower Leg
60"

4 x



Horizontal Brace
70½"

4 x



Diagonal Brace
78"

1 x



5' Stairway

2 x



Stairway Handrail

1 x



Porch Handrail

BEFORE YOU START · RULES

READ THIS BEFORE ANYTHING ELSE

Four rules carry through every step of this manual. Get familiar with them now and the rest of the build is mechanical.

01**CRITICAL · ORDER OF OPS**

Do not tighten any nut until the tower is fully assembled. All nuts in this kit are nylock — they need a wrench to start, but should remain loose. Run nuts only enough to capture the bolt through Steps C–E. Final torque happens in a single pass at Step F. Tightening early forces the geometry out of square.

02**CRITICAL · BRACE FACES**

Diagonals outside, horizontals inside. Horizontals run angle-down (open face of the angle pointing toward the ground). Mixing the faces breaks the load path.

03**CRITICAL · BOLT ORIENTATION**

All $\frac{5}{16}$ " × $1\frac{1}{2}$ " frame bolts run **inside out** — bolt head on the **inside** of the tower frame, nylock nut on the **outside**, with a flat washer on each side. Same orientation at every leg-to-brace junction.

04**HARDWARE · GRADE 5 THROUGHOUT**

Every bolt in this kit is Grade 5. Blind-to-base uses $\frac{3}{8}$ " bolts with $1\frac{1}{4}$ " fender washers both sides and $\frac{3}{8}$ " nylocks ($\frac{9}{16}$ " wrench). The frame uses $\frac{5}{16}$ " × $1\frac{1}{2}$ " bolts with flat washers both sides and $\frac{5}{16}$ " nylocks ($\frac{1}{2}$ " wrench).

STEP A · MOUNT STAGE

A

ATTACH BLIND TO BLIND BASE

Mount the blind to the blind base while both are still upright on the ground, using four $\frac{3}{8}$ " bolts with $1\frac{1}{4}$ " fender washers on both sides and nylock nuts. Requires a $\frac{9}{16}$ " socket / wrench.

This is the first step because the blind+base assembly is what gets laid down in Step B and built up around. Center the blind over the four blind-attach tabs on the blind base perimeter. Pass each $\frac{3}{8}$ " Grade-5 bolt through with a $1\frac{1}{4}$ " fender washer on the head side and another fender washer on the nut side, then thread the nylock nut. Confirm the blind is seated flush before tightening.

SEATED FLUSH Any gap between blind and base concentrates load on the fasteners. Reseat before continuing.

PARTS IN THIS STEP

- 1 VisionX Blind (separate kit)**
see your blind invoice for the matching SKU
- 2 1 Blind Base — sized to the kit you ordered**
VX-BASE-44 / 46 / 56 · BOM: matching Base sheet
- 3 4 sets Blind-to-Base Hardware (Grade 5)**
 $\frac{3}{8}$ " bolt + 2× $1\frac{1}{4}$ " fender washers + $\frac{3}{8}$ " nylock · $\frac{9}{16}$ " wrench · ships in the bolt kit

DIAGRAM · STEP A — 5' TOWER

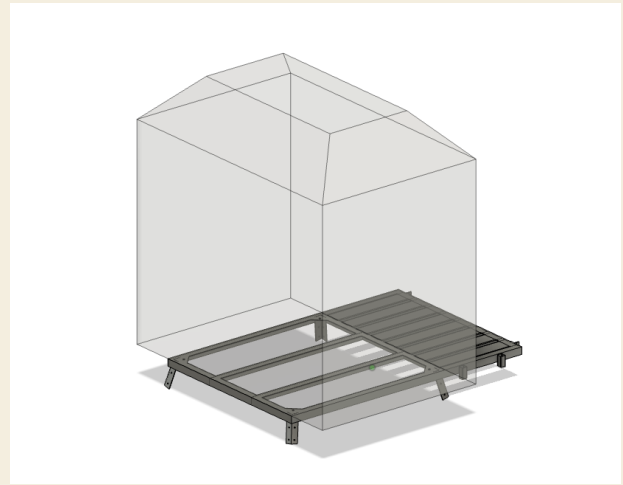


Fig. A-1

STEP B · SETUP STAGE

B

LAY BLIND + BASE ON SIDE

Tip the blind+base assembly 90° onto the porch side, so the porch deck and one wall of the blind both rest on the ground. The blind base is now vertical, with leg-attach plates facing horizontally outward.

With the assembly on its side the blind extends horizontally one direction, the legs will install horizontally the opposite direction. The whole frame builds up around the side-laying blind on the ground. Set a moving blanket or strip of plywood under the blind side wall to protect the finish.

TWO-PERSON TIP The blind+base assembly is awkward but not heavy. Two people, one on each end, walk it over onto its side.

PARTS IN THIS STEP

No new parts — this is a procedural step.

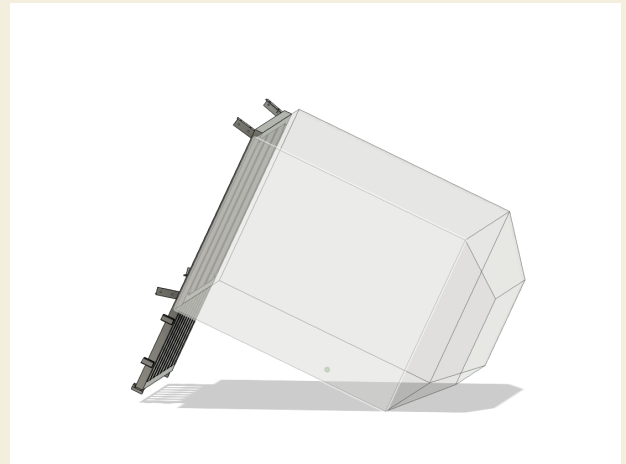
DIAGRAM · STEP B — 5' TOWER

Fig. B-1

STEP C · FRAME STAGE

C

ATTACH 5' LEGS

Bolt four 5' legs to the inside face of the blind base's leg-attach tabs using two $\frac{5}{16}$ " \times $1\frac{1}{2}$ " bolts per leg, washer-on-each-side with nylock nuts. Leave the frame loose.

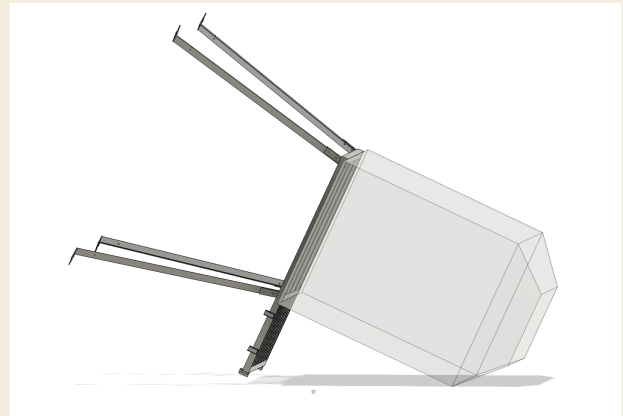
Each leg sits on the inside of the corresponding tab on the blind base perimeter. Insert each $\frac{5}{16}$ " \times $1\frac{1}{2}$ " Grade-5 bolt from **inside the frame, head in**, with a washer on the head side and another washer + nylock nut on the outside. The nylocks need a wrench to start. Run them only enough to capture the bolt — the frame stays loose until Step F.

DO NOT TIGHTEN Leave the entire frame loose until every brace and diagonal is in place. Nylocks should be captured but not torqued.

PARTS IN THIS STEP

- 1 4 5' Tower Leg — $2\times 2\times\frac{3}{16}$ " angle, 60"
VX-LEG-5 · BOM: Tower Legs, 5' Frame
- 2 4 Leg Foot — $\frac{3}{16}\times 3$ " flat band weld-on
VX-FOOT · BOM: Leg Foot, 5' Frame · pre-welded to leg
- 3 8 $\frac{5}{16}$ " \times $1\frac{1}{2}$ " Hex Bolts (Grade 5)
2 per leg · from frame bolt kit
- 4 16 $\frac{5}{16}$ " Flat Washers
2 per bolt · one each side
- 5 8 $\frac{5}{16}$ " Nylock Nuts
1 per bolt · $\frac{1}{2}$ " wrench to start

DIAGRAM · STEP C — 5' TOWER



BOLT ORIENTATION DETAIL



Fig. C-1

STEP D · FRAME STAGE

D

INSTALL HORIZONTAL BRACES

Attach four **70½"** horizontal braces angle-down to the **inside** of each vertical leg, forming the bottom-frame perimeter. Two **⅝" × 1½"** bolts per junction, washer each side, nylock on the outside.

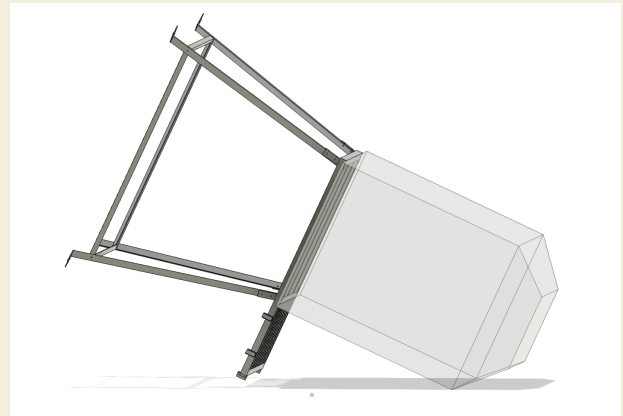
Pre-sort by length — the 5' tower has only one horizontal length (70½") and one diagonal length (78"). Slide each brace into position with the open face of the angle pointing toward the ground. Insert each **⅝" × 1½"** Grade-5 bolt from **inside the frame, head in**, with a washer on the head side and another washer + nylock nut on the outside. Run the nylocks just enough to capture the bolt — do not torque yet.

CRITICAL Horizontals connect to the **inside** of the legs. Diagonals (Step E) connect to the **outside**. Mixing these breaks the load path.

PARTS IN THIS STEP

- 1** 4 Horizontal Brace · 70½" length
1½ × 1½ × 3/16" angle · VX-HB-5 · front, rear & sides
- 2** 8 ⅝" × 1½" Hex Bolts (Grade 5)
2 per brace · from frame bolt kit
- 3** 16 ⅝" Flat Washers
2 per bolt · one each side
- 4** 8 ⅝" Nylock Nuts
1 per bolt · capture only

DIAGRAM · STEP D — 5' TOWER



BOLT ORIENTATION DETAIL

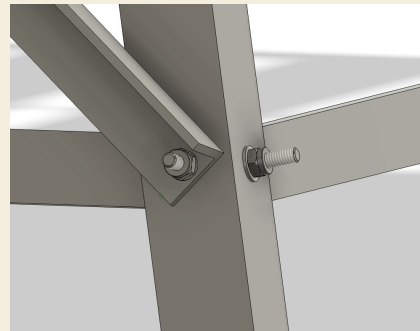


Fig. D-1

STEP E · FRAME STAGE

E

INSTALL DIAGONAL BRACES

Attach four **78"** diagonal braces angle-down to the **outside** of the vertical legs — one diagonal per face, running corner-to-corner. Two $\frac{5}{16}$ " × $1\frac{1}{2}$ " bolts per junction, washer each side, nylock on the outside.

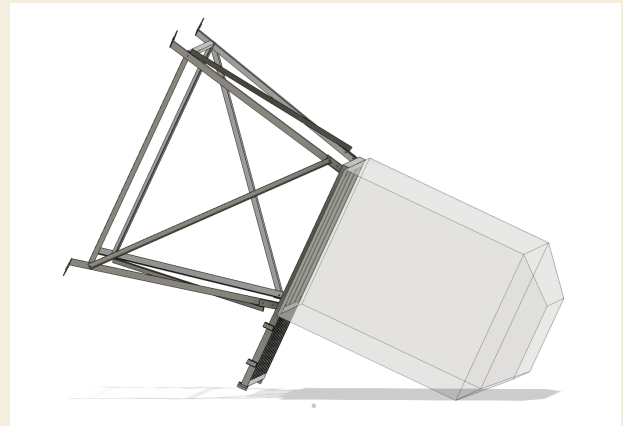
Each face gets a single diagonal, top corner to ground corner. The brace sits on the outside face of the leg. Insert each $\frac{5}{16}$ " × $1\frac{1}{2}$ " Grade-5 bolt from **inside the frame, head in**, with a washer on each side and a nylock nut on the outside. Run the nylocks just enough to capture the bolt. Front and back face diagonals lay parallel; left and right do the same.

OUTSIDE FACE Diagonals must sit **outside** the legs. Inside-face diagonals will foul the horizontal braces and won't carry load correctly.

PARTS IN THIS STEP

- 1** 4 Diagonal Brace · 78" length
 $1\frac{1}{2}$ × $1\frac{1}{2}$ × $\frac{3}{16}$ " angle · VX-DB-5 · one per face
- 2** 8 $\frac{5}{16}$ " × $1\frac{1}{2}$ " Hex Bolts (Grade 5)
2 per brace · from frame bolt kit
- 3** 16 $\frac{5}{16}$ " Flat Washers
2 per bolt · one each side
- 4** 8 $\frac{5}{16}$ " Nylock Nuts
1 per bolt · capture only

DIAGRAM · STEP E — 5' TOWER



BOLT ORIENTATION DETAIL

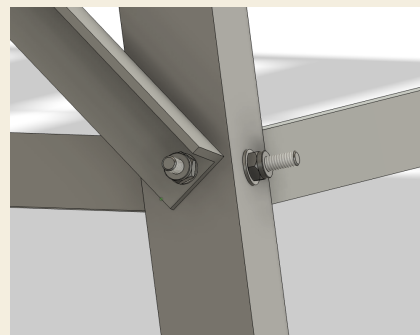


Fig. E-1

STEP F · HARDWARE STAGE

F

TIGHTEN ALL NUTS

Run a ½" wrench, ratchet, and socket through every ⅝" nylock on the frame and torque to spec — assembly still on its side on the ground.

Work around the tower in two passes. First pass: snug every nut without distorting the frame. Second pass: final torque. Tightening only after the full frame is in place keeps the geometry from binding.

TWO-PASS TORQUE Skipping the snug pass forces the frame out of square. First snug all 24 fasteners, then torque each in sequence.

PARTS IN THIS STEP

- **24 ⅝" × 1½" Bolts in place**
from Steps C-E · 8 leg + 8 horizontal + 8 diagonal
- **24 ⅝" Nylock Nuts in place**
all to be torqued in this pass with a ½" socket

DIAGRAM · STEP F — 5' TOWER

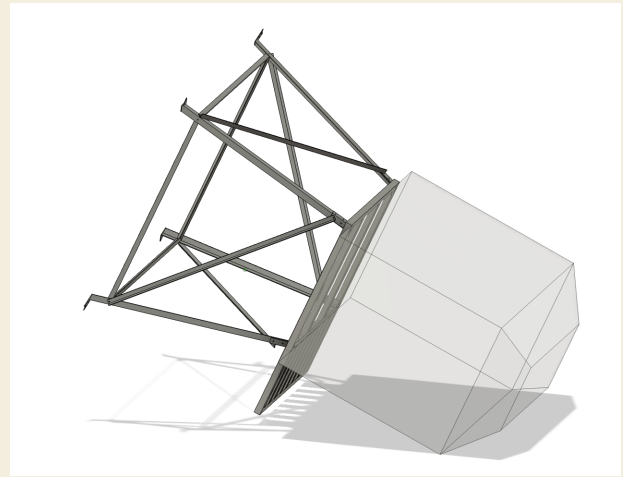


Fig. F-1

STEP G · STAND STAGE

G

STAND TOWER & BLIND

Roll/lift the entire assembled tower-and-blind from lay-flat to standing position with two people.

Plan the lift: clear walking paths and pre-position on level ground. The 5' tower with blind weighs roughly 350 lbs assembled — two people handle it comfortably with a controlled walk-up. Settle onto the four leg feet and confirm the tower stands plumb before attaching the porch handrail and stairway.

TWO-PERSON LIFT Never lift alone. The center of mass shifts as the tower rotates upright — a controlled walk-up keeps it stable.

PARTS IN THIS STEP

No new parts — this is a procedural step.

DIAGRAM · STEP G — 5' TOWER

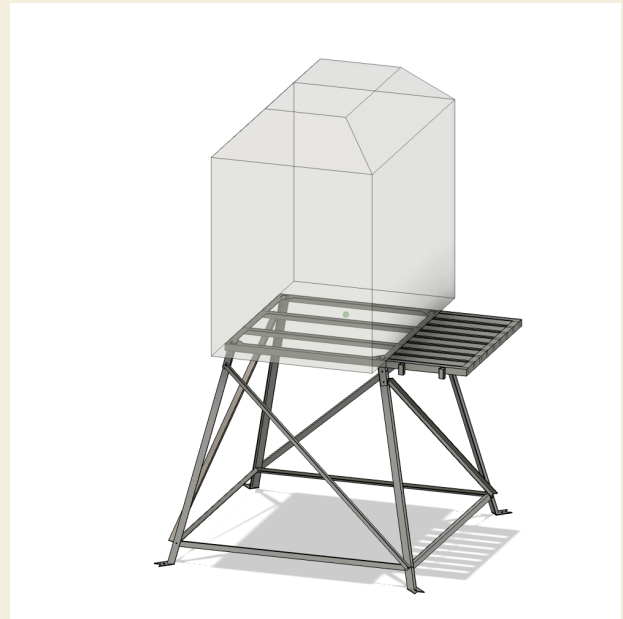


Fig. G-1

STEP H · FINISH STAGE

H

ATTACH STAIRWAY

With the tower standing, drop the stairway into the slots at the porch end of the blind base.

The stairway top plate has two tabs that drop directly into the ladder sockets welded into the porch frame. Set the stair feet on level ground and confirm the stair sits captive in both sockets before climbing.

PARTS IN THIS STEP

- 1** 1 5' Stairway
VX-LADDER-5 · BOM: 5' Ladder, complete
- Ladder sockets
1½"×1½" .083 square tube · pre-welded
to porch frame

DIAGRAM · STEP H — 5' TOWER

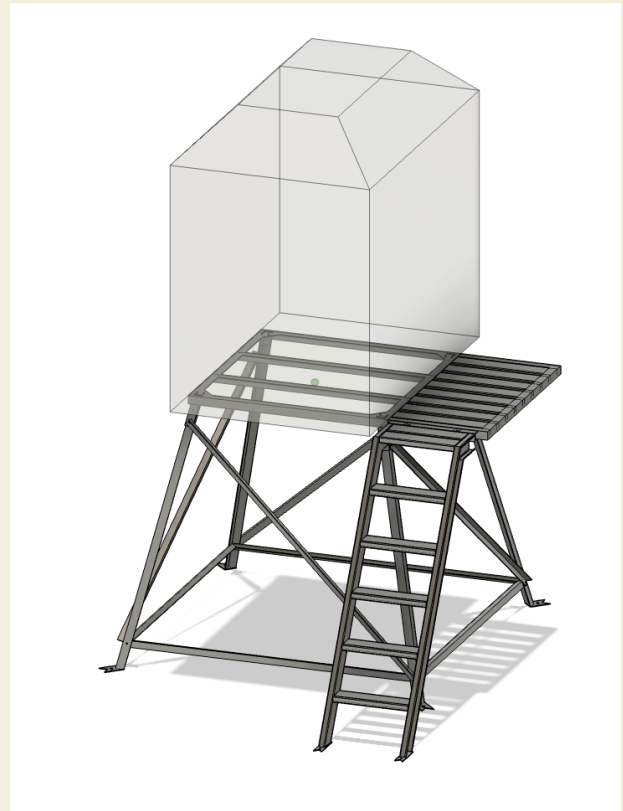


Fig. H-1

STEP I · FINISH STAGE

ATTACH STAIRWAY HANDRAIL

Mount both 5' stairway handrails (one each side) — install before anyone climbs. Each handrail bolts to the handrail mounting blocks with four 2" x 5/16" Grade-5 bolts, washers, and nylock nuts.

Each handrail bolts to the four mounting blocks on the stair stringers — washer on the bolt head, bolt through the block, nylock on the back. Both handrails must be on before anyone climbs to fit the porch handrail (Step J).

CLIMB-SAFE ORDER Install both stairway handrails before the first climb — the porch handrail is attached from above.

PARTS IN THIS STEP

- 1 2 5' Stairway Handrails (one each side)
VX-RAIL-STAIR-5 · BOM: 5' Ladder, Railing
- 2 4 Handrail Mounting Blocks
tapped 5/16" · two per handrail
- 3 4 sets Handrail Bolt Hardware (Grade 5)
2" x 5/16" bolt + washer + nylock · one per block

DIAGRAM · STEP I — 5' TOWER



BOLT ORIENTATION DETAIL

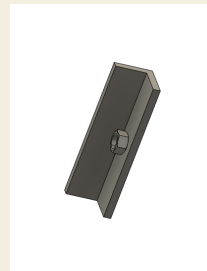
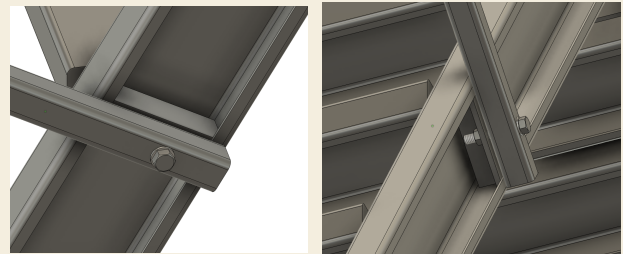


Fig. I-1

STEP J · HARDWARE STAGE

J

ATTACH PORCH HANDRAIL

Climb the now-railed stairway to the porch and mount the porch handrail with four 2" × 5/16" Grade-5 bolts, washers, and nylock nuts.

Slide the handrail uprights into the porch slots and fasten through the pre-drilled holes. Bolt-head goes outboard with a washer; the nylock nut rides on the inside. The rail returns into the blind base on both ends to close the perimeter around the porch.

PARTS IN THIS STEP

- 1 **1 Porch Handrail Assembly**
1"×1" .083 square tube · VX-RAIL-PORCH
· BOM: Railing, Base
- 2 **4 2" × 5/16" Hex Bolts (Grade 5)**
porch handrail bolt kit
- 3 **4 5/16" Flat Washers**
one per bolt · head side
- 4 **4 5/16" Nylock Nuts**
porch handrail bolt kit

DIAGRAM · STEP J — 5' TOWER



BOLT ORIENTATION DETAIL

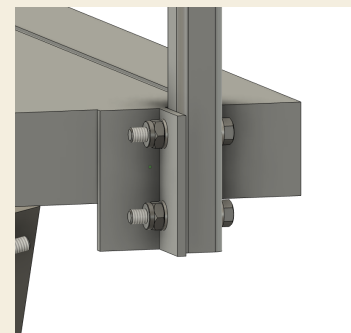


Fig. J-1

STEP K · ANCHOR STAGE

K

ANCHOR TOWER & STAIRWAY

Stake the tower and stairway into the ground, then run a steel cable from a ground anchor in the center of the tower up to the four blind-to-base bolts. Hardware is **customer-supplied**.

Drive a stake through each of the four tower-leg feet and through both stairway feet — six stakes total. Install a ground anchor (auger, helical, or drive-in) centered between the four legs. Run a steel cable from the ground anchor up to each of the four bolts that secure the blind to the blind base. We recommend joining the cable to each bolt with a short length of chain so the cable can take up tension as the soil settles.

CUSTOMER-SUPPLIED Anchoring hardware is **not included** with the tower kit. Match stake length, ground-anchor type, and cable rating to your soil and exposure. When in doubt, oversize.

PARTS IN THIS STEP

- 1** 6 Stakes — tower & stairway feet
customer-supplied · 4 for tower, 2 for stairway
- 2** 1 Ground Anchor — center of tower
customer-supplied · auger, helical, or drive-in
- 3** 1 Steel Cable Run
customer-supplied · ground anchor → 4 blind-base bolts
- 4** 4 Short Chain Sections (recommended)
customer-supplied · cable-to-bolt connector

LAST PAGE · PARTS REFERENCE

PARTS REFERENCE

Every part referenced across this 5' tower manual, with its VisionX SKU, dimension, BOM line, and where it attaches on the tower. Cross-check this against your packing slip before starting.

SKU	PART & WHERE IT ATTACHES	QTY	BOM REFERENCE
BLIND BASES — CHOOSE BY KIT			
VX-BASE-44 / 46 / 56	Blind Base — 4x4, 4x6, or 5x6 footprint	1 each	BOM · matching Base sheet
TOWER FRAME — 5'			
VX-LEG-5	5' Tower Leg · 2x2x $\frac{3}{16}$ " angle, 60"	4 per tower	BOM · 5' Frame · row 1
VX-FOOT	Leg Foot · $\frac{3}{16}$ x3" flat band (pre-welded)	4 per tower	BOM · 5' Frame · row 2
VX-HB-5	Horizontal Brace · 1 $\frac{1}{2}$ x1 $\frac{1}{2}$ x $\frac{3}{16}$ " angle	4 per tower	BOM · 5' Frame · rows 3-6
VX-DB-5	Diagonal Brace · 1 $\frac{1}{2}$ x1 $\frac{1}{2}$ x $\frac{3}{16}$ " angle	4 per tower	BOM · 5' Frame · rows 3-6
MOUNT, HANDRAILS & STAIR			
VX-BOLT-KIT	Tower / Blind Bolt Kit	1 per tower	ships with tower kit
VX-RAIL-PORCH	Porch Handrail · 1"x1" .083 sq tube	1 per tower	BOM · Base sheet
VX-LADDER-5	5' Stairway	1 per kit	BOM · 5' Ladder sheet
VX-RAIL-STAIR-5	5' Stairway Handrail · one each side	2 per kit	BOM · 5' Ladder · railing
—	Handrail Mounting Block	4 per kit	tapped 5/16" · two per handrail
HARDWARE — GRADE 5 THROUGHOUT			
—	$\frac{3}{8}$ " Hex Bolt · blind-to-base	4 per tower	9/16" wrench · ships with bolt kit
—	1 $\frac{1}{4}$ " Fender Washer · blind-to-base	8 per tower	two per bolt · one each side
—	$\frac{3}{8}$ " Nylock Nut · blind-to-base	4 per tower	ships with bolt kit
—	$\frac{5}{16}$ " x 1 $\frac{1}{2}$ " Hex Bolt · frame	24 per tower	$\frac{1}{2}$ " wrench · all leg + brace junctions
—	$\frac{5}{16}$ " Flat Washer · frame	48 per tower	two per frame bolt · one each side
—	$\frac{5}{16}$ " Nylock Nut · frame	24 per tower	matches frame bolt count
—	2" x $\frac{5}{16}$ " Hex Bolt · handrails	8 per tower	4 porch + 4 stairway
—	$\frac{5}{16}$ " Flat Washer · handrails	8 per tower	one per bolt · head side
—	$\frac{5}{16}$ " Nylock Nut · handrails	8 per tower	4 porch + 4 stairway
ANCHOR KIT — CUSTOMER-SUPPLIED			
—	Stakes — tower & stairway feet	6 total	4 tower + 2 stairway · soil-rated
—	Ground Anchor — tower-center	1 per tower	auger, helical, or drive-in
—	Steel Cable Run · ground anchor → 4 blind-base bolts	1 per tower	rated for tower wind load
—	Short Chain Sections (recommended)	4 per tower	cable-to-bolt connector

SUPPORT

Replacement parts, assembly questions, or warranty service — reach out to your dealer or VisionX directly. · visxmf.com · Wholesale & Dealer Program · Jacksboro, TX

LIFETIME STRUCTURAL WARRANTY

VisionX backs the structural shell of every tower and blind for the original purchaser's lifetime; damage from misuse or off-manual installation is excluded. Keep your packing slip and invoice for claims.